

CCNA



IT EDUCATION
CENTRE

CCNA Exam v1.0 (200-301)

Exam Description:

CCNA Exam v1.0 (CCNA 200-301) is a 120-minute exam associated with the CCNA certification. This exam tests a candidate's knowledge and skills related to network fundamentals, network access, IP connectivity, IP services, security fundamentals, and automation and programmability. The course, Implementing and Administering Cisco Solutions (CCNA), helps candidates prepare for this exam.

The following topics are general guidelines for the content likely to be included on the exam. However, other related topics may also appear on any specific delivery of the exam. To better reflect the contents of the exam and for clarity purposes, the guidelines below may change at any time without notice.



IT EDUCATION
CENTRE

1.0 Network Fundamentals

- 1.1 Explain the role and function of network components
 - 1.1.a Routers
 - 1.1.b L2 and L3 switches
 - 1.1.c Next-generation firewalls and IPS
 - 1.1.d Access points
 - 1.1.e Controllers (Cisco DNA Center and WLC)
 - 1.1.f Endpoints
 - 1.1.g Servers

- 1.2 Describe characteristics of network topology architectures
 - 1.2.a 2 tier
 - 1.2.b 3 tier
 - 1.2.c Spine-leaf
 - 1.2.d WAN
 - 1.2.e Small office/home office (SOHO)
 - 1.2.f On-premises and cloud

- 1.3 Compare physical interface and cabling types
 - 1.3.a Single-mode fiber, multimode fiber, copper
 - 1.3.b Connections (Ethernet shared media and point-to-point)
 - 1.3.c Concepts of PoE

- 1.4 Identify interface and cable issues
(collisions, errors, mismatch duplex, and/or speed)

- 1.5 Compare TCP to UDP

- 1.6 Configure and verify IPv4 addressing and subnetting

- 1.7 Describe the need for private IPv4 addressing

- 1.8 Configure and verify IPv6 addressing and prefix



IT EDUCATION
CENTRE

1.0 Network Fundamentals

1.9 Compare IPv6 address types

1.9.a Global unicast

1.9.b Unique local

1.9.c Link local

1.9.d Anycast

1.9.e Multicast

1.9.f Modified EUI 64

1.10 Verify IP parameters for Client OS (Windows, Mac OS, Linux)

1.11 Describe wireless principles

1.11.a Nonoverlapping Wi-Fi channels

1.11.b SSID

1.11.c RF

1.11.d Encryption

1.12 Explain virtualization fundamentals (virtual machines)

1.13 Describe switching concepts

1.13.a MAC learning and aging

1.13.b Frame switching

1.13.c Frame flooding

1.13.d MAC address table



IT EDUCATION
CENTRE

2.0 Network Access

2.1 Configure and verify VLANs (normal range) spanning multiple switches

2.1.a Access ports (data and voice)

2.1.b Default VLAN

2.1.c Connectivity

2.2 Configure and verify interswitch connectivity

2.2.a Trunk ports

2.2.b 802.1Q

2.2.c Native VLAN

2.3 Configure and verify Layer 2 discovery protocols
(Cisco Discovery Protocol and LLDP)

2.4 Configure and verify (Layer 2/Layer 3) EtherChannel (LACP)

2.5 Describe the need for and basic operations of Rapid PVST+
Spanning Tree Protocol and identify basic operations

2.5.a Root port, root bridge (primary/secondary), and other port names

2.5.b Port states (forwarding/blocking)

2.5.c PortFast benefits

2.6 Compare Cisco Wireless Architectures and AP modes

2.7 Describe physical infrastructure connections of WLAN components
(AP, WLC, access/trunk ports, and LAG)

2.8 Describe AP and WLC management access connections
(Telnet, SSH, HTTP, HTTPS, console, and TACACS+/RADIUS)

2.9 Configure the components of a wireless LAN access for
client connectivity using GUI only such as WLAN creation, security
settings, QoS profiles, and advanced WLAN settings



IT EDUCATION
CENTRE

2.0 Network Access

2.1 Configure and verify VLANs (normal range) spanning multiple switches

2.1.a Access ports (data and voice)

2.1.b Default VLAN

2.1.c Connectivity

2.2 Configure and verify interswitch connectivity

2.2.a Trunk ports

2.2.b 802.1Q

2.2.c Native VLAN

2.3 Configure and verify Layer 2 discovery protocols
(Cisco Discovery Protocol and LLDP)

2.4 Configure and verify (Layer 2/Layer 3) EtherChannel (LACP)

2.5 Describe the need for and basic operations of Rapid PVST+
Spanning Tree Protocol and identify basic operations

2.5.a Root port, root bridge (primary/secondary), and other port names

2.5.b Port states (forwarding/blocking)

2.5.c PortFast benefits

2.6 Compare Cisco Wireless Architectures and AP modes

2.7 Describe physical infrastructure connections of WLAN components
(AP, WLC, access/trunk ports, and LAG)

2.8 Describe AP and WLC management access connections
(Telnet, SSH, HTTP, HTTPS, console, and TACACS+/RADIUS)

2.9 Configure the components of a wireless LAN access for
client connectivity using GUI only such as WLAN creation,
security settings, QoS profiles, and advanced WLAN settings



IT EDUCATION
CENTRE

4.0 IP Services

- 4.1 Configure and verify inside source NAT using static and pools
- 4.2 Configure and verify NTP operating in a client and server mode
- 4.3 Explain the role of DHCP and DNS within the network
- 4.4 Explain the function of SNMP in network operations
- 4.5 Describe the use of syslog features including facilities and levels
- 4.6 Configure and verify DHCP client and relay
- 4.7 Explain the forwarding per-hop behavior (PHB) for QoS such as classification, marking, queuing, congestion, policing, shaping)
- 4.8 Configure network devices for remote access using SSH
- 4.9 Describe the capabilities and function of TFTP/FTP in the network



IT EDUCATION
CENTRE

5.0 Security Fundamentals

- 5.1 Define key security concepts (threats, vulnerabilities, exploits, and mitigation techniques)
- 5.2 Describe security program elements (user awareness, training, and physical access control)
- 5.3 Configure device access control using local passwords
- 5.4 Describe security password policies elements, such as management, complexity, and password alternatives (multifactor authentication, certificates, and biometrics)
- 5.5 Describe remote access and site-to-site VPNs
- 5.6 Configure and verify access control lists
- 5.7 Configure Layer 2 security features (DHCP snooping, dynamic ARP inspection, and port security)
- 5.8 Differentiate authentication, authorization, and accounting concepts
- 5.9 Describe wireless security protocols (WPA, WPA2, and WPA3)
- 5.10 Configure WLAN using WPA2 PSK using the GUI



IT EDUCATION
CENTRE

6.0 Automation and Programmability

- 6.1 Explain how automation impacts network management
- 6.2 Compare traditional networks with controller-based networking
- 6.3 Describe controller-based and software defined architectures (overlay, underlay, and fabric)
 - 6.3.a Separation of control plane and data plane
 - 6.3.b North-bound and south-bound APIs
- 6.4 Compare traditional campus device management with Cisco DNA Center enabled device
- 6.5 Describe characteristics of REST-based APIs (CRUD, HTTP verbs, and data encoding)
- 6.6 Recognize the capabilities of configuration management mechanisms Puppet, Chef, and Ansible
- 6.7 Interpret JSON encoded data



IT EDUCATION
CENTRE

ETHICAL HACKING



IT EDUCATION
CENTRE

1. Introduction to ethical hacking
2. Foot Printing & Reconnaissance, Enumeration
3. Scanning Network
4. Vulnerability Analysis
5. System Hacking
6. Malware Threats
7. Sniffing
8. Social Engineering
9. Denial -of-Service
10. Session Hijacking
11. Evading IDS, Firewalls, and Honeypots
12. Hacking Web Servers
13. Hacking Web Applications
14. SQL Injection
15. Hacking Wireless Networks
16. Hacking Mobile Platforms
17. IoT and OT Hacking
18. Cloud Computing
19. Cryptography



IT EDUCATION
CENTRE

LINUX



IT EDUCATION
CENTRE

RH124 - Red Hat System Administration I

- Accessing the Command Line
- Managing Files from the Command Line
- Getting help in Red Hat Enterprise Linux
- Creating, Viewing and Editing Text Files
- Managing Local Linux Users and Groups
- Controlling Access to Files
- Monitoring and Managing Linux Processes
- Controlling Services and Daemons
- Configuring and Securing OpenSSH Service
- Analyzing and Storing Logs
- Managing Red Hat Enterprise Linux Networking
- Archiving and Copying Files Between Systems
- Installing and Updating Software Packages
- Accessing Linux File Systems
- Analyzing Servers and Getting Support

RH134 - Red Hat System Administration II

- Installing Red Hat Enterprise Linux
- Improving Command Line Productivity
- Scheduling Future Linux Tasks
- Managing Priority of Linux Processes
- Controlling Access to Files With Access Control Lists (ACLs)
- Managing SELinux Security
- Maintaining Basic Storage
- Managing Logical Volume Management (LVM) Storage
- Implementing Advanced Storage Features
- Accessing Network Storage with Network File System (NFS)
- Controlling and Troubleshooting the Red Hat Enterprise Linux Boot Process
- Managing Network Security



IT EDUCATION
CENTRE

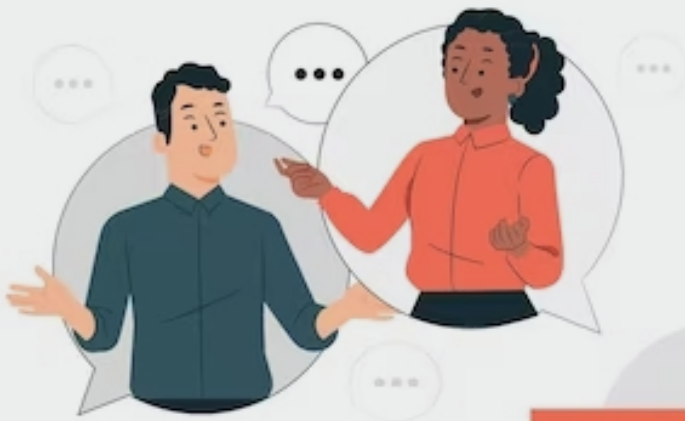
RH294 - Red Hat System Administration III

- Introduction to Ansible
- Deploying Ansible
- Implementing Playbooks
- Managing Variables and Facts
- Implementing Task Control
- Deploying Files to Managed Hosts
- Managing Large Projects
- Simplifying Playbooks with Roles
- Troubleshooting Ansible
- Automating Linux Administration Tasks



IT EDUCATION
CENTRE

BUSINESS SOFT SKILLS



Soft Skills



IT EDUCATION
CENTRE

SPOKEN ENGLISH-

- Basic Introduction of oneself
- Parts of speech (Noun/pronoun/verb/adjective/adverbs/conjunctions, etc.)
- Types of speech (active-passive/direct-indirect)
- Homophones/articles/punctuation/conjunctive adverbs
- Synonyms/ antonyms/similes
- Idioms/proverbs/phrases

PERSONALITY DEVELOPMENT-

- Group discussion
- Extempore
- Picture composition
- Sense of dressing up
- Basic body language attributes
- Pronunciation/Enunciation
- Email writing
- Report writing

Other benefits-

- FAQs- HR Round
- Vocabulary building
- Live activities to enhance confidence
- Self-explanatory notes



IT EDUCATION
CENTRE